

Wm. corner adopted

Co. U.S. Surveyors in 1884

(old cor. removed) 56 W

Now one marked by large stone in fence

obst. cor. = temporarily set by D. Jenkins.

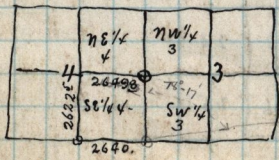
S. E. cor NE 1/4 Sec 7 T 5 N R 1 W.

Draw this point the Sec line bears

$N 1^{\circ} 01' 1/2'' E + S 1^{\circ} 01' 1/2'' W$ (true) 39.88'

with directions to the corners of Sec 7-80

And to S.W. cor of NE 1/4 Sec 4 the true bearing is $N 89^{\circ} 33' W$, 2649.910 feet old



Obst. Pk.